



A GLOBAL LEADER

IN ADVANCED POLYMER SOLUTIONS FOR

AEROSPACE AND DEFENSE



Our Key Capabilities

Precision Injection Molding:

Development and manufacture of intricate, high-precision components for aerospace applications.

Insert Molding: Combining metal and plastic components to enhance strength, durability, and performance.

Complex and High-Performance

Extrusions: Production of advanced fluoropolymer and fluoroplastic materials for critical fluid handling. Co-, tri-, and intricate extrusions from 1/32" to giant 30" profiles in a multitude of materials.

World Class Machining: Creating precision and complex parts in our machining center, including CNC turning and milling and 4- and 5-axis capabilities.

Advanced Packaging & Assembly:

Providing an integrated build-to-print service for aerospace assemblies including metal-plastic ultrasonic welding, soldering, bonding, and more.



Precise Aerospace is a global manufacturer of custom injection, compression, and transfer molded plastic components made of complex engineering resins, from thermoset to thermoplastic materials. We specialize in CNC machining and value-added assembly to offer complete close-tolerance solutions for the aerospace and defense industry. We are ISO9100, ISO 9001, and ITAR Registered.

OUR EXPERTISE:

Interiors, Jetways, and Cargo Systems:

- **Lighting** — Durayl® lenses, diffusers, LED lens covers
- **Seating Components and Seat Track Covers** — Complex extrusions and precision molding and machining
- **Overhead Compartments** — Durable and impact resistant custom profiles
- **Wall and Ceiling Panels** — Lightweight heat resistance and noise reduction
- **Lavatory Elements** — High-wear and corrosion resistant components
- **Wear and Weather Strips** — Wear, abrasion, and impact protection
- **Latches and Roller Assemblies**
- **Ventilation** — PTFE ducting and seals

Fluid Management:

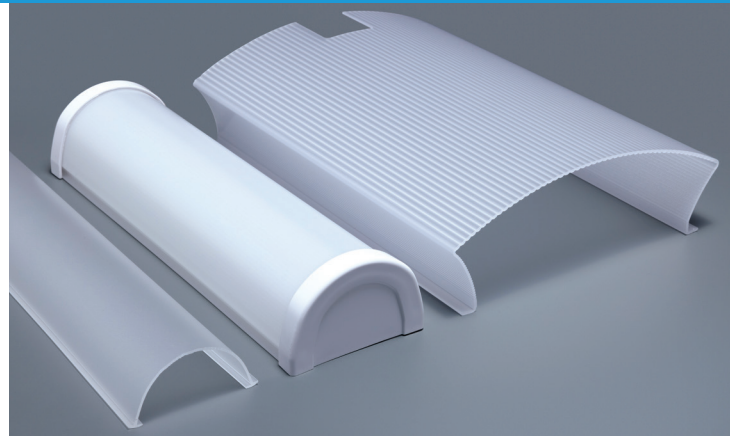
- **Seals and Gaskets** — Enflon® virgin and filled PTFE (o-rings)
- **Protective and Anti-Stick Barrier** — Skived PTFE film
- **Tubing and Hoses** — Altaflo® Fluoropolymer tubing

Wire Management:

- **Heat Shrink Tubing** — Insultab® tubing to insulate, bundle, seal, and protect
- **Wire Harnessing and Insulation** — Spiral wrap protective tubing
- **Convolute Tubing** — Protect and organize wire and cable bundles
- **Insulators and Connectors**

Maintenance Tools:

- **EnduroSharp® Torlon® adhesive removal tools**
- **Seals, bushings, and inlets (roller bearings)**



Get in touch with our experts.

EMAIL sales@precisemfg.com / WEB precisemfg.com/contact / PHONE 951.898.0500